

iCON

i-CREATIV

USB MIDI controller with touch screen and AirLight™ 3D effector.

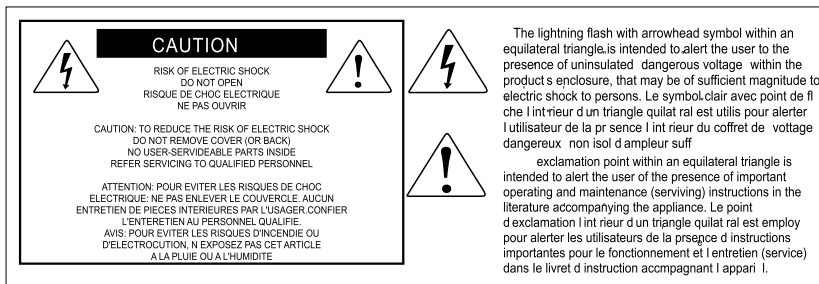


User manual



N16549





Important Safety Instructions

1. Read these instructions.
2. Keep these instructions.
3. Heed all warnings.
4. Follow all instructions.
5. Do not use this apparatus near water.
6. Clean only with dry cloth.
7. Do not block any ventilation openings. Install in accordance with the manufacture's instructions.
8. Do not install near any heat sources such as radiators, heat registers, stoves, or other apparatus (including amplifiers) that produce heat.
9. Only use attachments/accessories specified by the manufacturer.

Contents



- Introduction**
 - What's in the package..... 1
- Features**..... 2
- Front Panel Layout**..... 3-4
- Side Panel Layout** 5
- Getting Started**
 - Connecting your iCreativ controller 5
- Installing iMap™ Software for Mac OSX** 6
- Installing iMap™ Software for Windows**..... 6-7
- Assigning MIDI functions with iMap™**..... 8
- iMap™ iCreativ software panel**..... 8-9
 - Piano mode..... 10
 - Pad mode 10
 - Control mode..... 11
 - X/Y Pad mode 11
 - Arpeggio mode 12
 - Clip mode..... 12
- Firmware upgrade**..... 13
- Restore the factory default settings**..... 14
- Daisy chain your iCreativ to other i-series controllers** 14
- Specifications**..... 15
- Services**..... 16

Introduction

Thank you for purchasing the ICON iCreativ USB MIDI controller. We sincerely trust this product will provide years of satisfactory service, but if anything is not to your complete satisfaction, we will endeavor to make things right.

In these pages, you'll find a detailed description of the features of the iCreativ, as well as a guided tour through its front and side panels, step-by-step instructions for its setup and use, and full specifications.

You'll also find a warranty card enclosed---please don't forget to fill it out and mail it so that you can receive online technical support at: www.icon-global.com. And so we can send you updated information about these and other ICON products in the future. As with most electronic devices, we strongly recommend you retain the original packaging. In the unlikely event the product must be returned for servicing, the original packaging (or reasonable equivalent) is required.

With proper care and adequate air circulation, your iCreativ will operate without any trouble for many years. We recommend that you record your serial number in the space provided below for future reference.

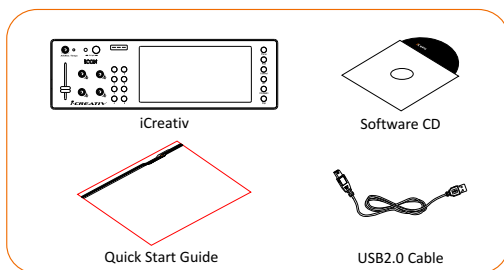
Please write your serial number here for future reference:

Purchased at:

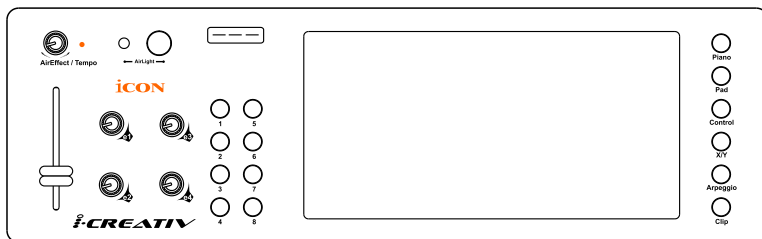
Date of purchase:

What's in the package?

- iCreativ USB MIDI controller x 1
- Software CD x 1
- Quick Start Guide
- USB2.0 Cable

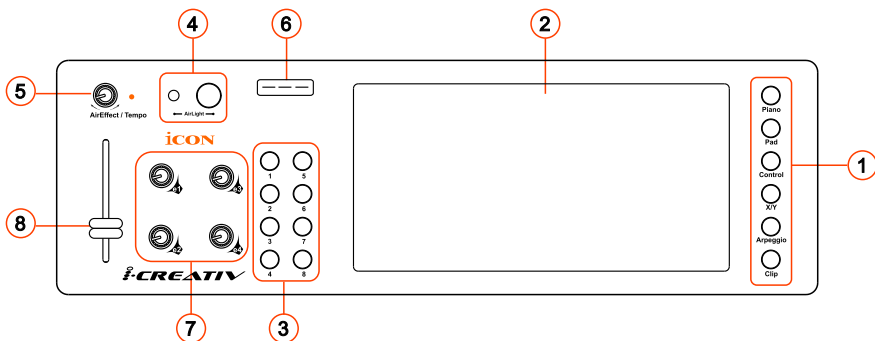


Features



- Large sensitive touch screen
- 8 x 16 LED embedded layout on X and Y axes under the touch screen
- 6 selectable modes for different applications
 1. **Piano:** The X-axis works as the keyboard's white key and the Y-axis as 8 steps of expressive values (Factory default that may change via iMap) with 8 Octave buttons
 2. **Pad:** The touch screen is divided into 8 lit drum pads with 2 layers (total 16 pads)
 3. **Controls:** The touch screen is divided into 8 vertical sliders with 2 layers (total 16 faders)
 4. **X/Y Pad:** Use as a X/Y touch pad with 8 layers
 5. **Clip:** 8 lit clip buttons with 2 layers (total 16 clips)
 6. **Arpeggio:** 8 arpeggio memory slots with 8 groups (total of 64 memory slots) for the user to store their desired arpeggio sequence (by importing MIDI file with iMap™ software provided)
- AirLight™ 3D effector built in with encoder knob to control different functions
- 4-assignable encoders
- 1-assignable fader
- 3-digi LED display
- iMap™ midi mapping software included for reassigning midi mapping and importing MIDI files for arpeggio memory slots
- Firmware upgrade via USB cable
- Extremely compact and perfectly match with MacBook™
- Class-compliant with Windows XP, Vista (32 bit / 64 bit), and Mac OS X
- USB bus-powered
- 2xUSB Connectors for daisy chain with other i-series controller
- Available in Black and White
- Difference colors aluminum cover is available (optional)
- Custom laser-engraving service for aluminum cover is available at on-line purchase (optional)

Front Panel Layout



① Mode Selector buttons

6-different modes including Piano, Pad, Controls, X/Y, Clip and Arpeggio for different applications

② Touch sensitive screen with 8x16 LED backlight

The touch screen will switch to different functions according to the mode selected as described below:

Piano mode

The touch screen is divided into x and y axes which represent 16 white horizontal keys and 8 vertical steps of expressive value. The Y-axis midi control message could change via provided iMap™ software (Factory default is CC11: Expressive).

The 8-buttons are used for Octave shift as button 5 represents the unshifted octave.

Pad mode

The touch screen is divided into 8 lit drum pads with 2 layers. Each drum pad could be set to its CH/Note with iMap™ software)

Control mode

The touch screen is divided into 8 vertical sliders with 2 layers. Each vertical slider could be set to its CH/CC value with iMap™ software)

X/Y mode

X/Y touch pad with 8 layer button switches. Each layer X/Y midi message value (CH/CC) could be set with iMap™ software.

Clip mode

The touch screen is divided into 8 clip buttons with 2 layers. Each clip buttons could be assigned a note value and channel with iMap™ software.

Arpeggio mode

The touch screen is divided into 8 arpeggio activation trigger buttons and each represent a memory slot for storing your created arpeggio midi file. With iMap™ software provided, you may import 64 (8 layers in total) desired midi files into your iCreativ.

Note: Each MIDI file size should not be larger than 256-bytes, otherwise the file may not be imported successfully.

③ Control buttons

Dependant on the mode selected, these buttons activate the following functions:

- 1. Piano mode:** Octave shift, button 5 represents unshifted octave
- 2. Pad mode:** Shifting between 2 layers
- 3. Control mode:** Shifting between 2 layers
- 4. X/Y mode:** Shifting between 8 layers of X/Y pads
- 5. Clip mode:** Shifting between 2 layers of clip buttons
- 6. Arpeggio mode:** Selects the 8 groups of pre-stored arpeggio sequence.

④ AirLight™ 3D effector

Wave your palm above the AirLight™ (no more than 9cm away) to create an effect. The iMap™ software allows the CC value for the 10 effects (layers) of the AirLight™ to be set

Note: As AirLight™ is an infra-red device, its performance will affect by sunlight or spot lights. Try to avoid light that affects its performance.

⑤ AirLight™ effect selector and Arpeggio tempo knob AirLight™ Effect selector

Rotate the knob to switch between the 10 effectors (layers).

Arpeggio tempo knob

Press down the knob, the red light will illuminate. Rotate the knob to adjust the tempo from 40-300 for your arpeggio.

(Note: Arpeggio mode must be enabled)

⑥ 3-digi LED

Shows the information of a particular control

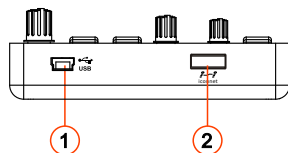
⑦ Knobs

These four programmable encoder knobs allow MIDI parameters to be adjust. Set their midi message via iMap™ software

⑧ Fader

Programmable fader slide to adjust linear MIDI parameters such as volume or change the midi message with iMap™ software.

Side Panel Layout (Image)



① USB port (B-Type)

Functions as a MIDI port to your notebook (or computer) and compatible software. Also provides power to your iCreativ

② USB port

Use to daisy chain with the second unit of iCreativ or any i-series controllers such as iDJ.

Note: Due to the limitation of power supply via USB port, your connected devices chain might exceed the power supply limit of the USB port and cause malfunction. For recommendations on the combination and daisy chain sequence of different i-series controllers, please visit the ICON website at the following link: www.icon-global.com

Getting Started

Connecting your iCreativ controller

① Connect the iCreativ to your Mac/PC via the USB port

Choose a USB port on your Mac/PC and insert the wide (flat) end of the USB cable. Connect the cable's small jack end to the iCreativ. Your Mac/PC should automatically “detect” the new hardware and notify you that it is ready to use

② Assign the MIDI messages to iCreativ

Refer to page.8 for “Assign the MIDI messages with “iMap™” software”.

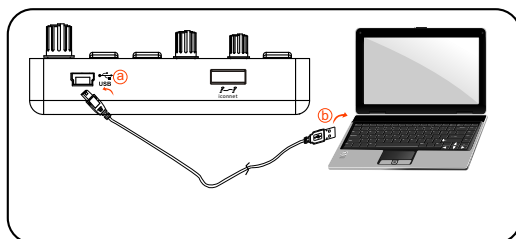


Diagram 1



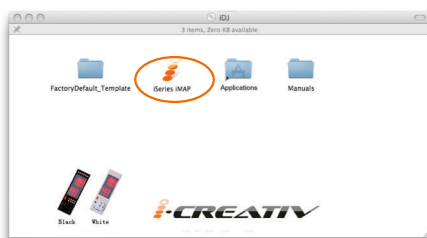
Diagram 2

Installing iMap™ Software for MAC OSX

Please follow the procedures below step-by-step to install your iMap™ software to Mac OS X

- ① Turn on your MAC.
- ② Insert the Utility CD in your CD-Rom and double click "iSeries iMap" icon.

Tips: By "drag and drop" the "iSeries iMap" icon into the "Applications" folder, you could create a "iMap" shortcut on your Mac's desktop.



Installing iMap™ Software for Windows

Please follow the procedures below step-by-step to install your iMap™ software.

- ① Turn on your PC.
 - ② Insert the Utility CD in your CD-Rom
- After you have inserted the CD into your CD-Rom, an installation screen should appear as shown in diagram 1; click "Install".

(Note: If the installation screen not appear automatically go to the CD folder and double click on "Setup")



Diagram 1

- ③ Setup Wizard appear
- Setup wizard appears, please click "Next"



Diagram 2

- ④ Choose Install Location
- Choose your preferred install location for iMap™ or use the default location and click "Next"



Diagram 3

5 Select shortcut

Select the start menu folder in which you would like to create the iMap™ shortcut. Then click "Next"



Diagram 4

6 Create a shortcut on your desktop

Please untick the box if you do not want to place a shortcut icon on your desktop for iMap™, otherwise click "Next"

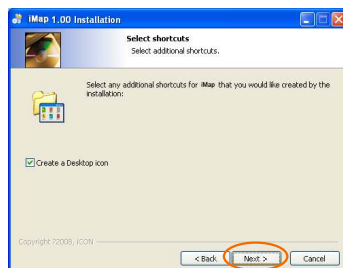


Diagram 5

7 iMap™ started to install

The iMap™ installation has now started, wait for it to finish. Then click "Finish"

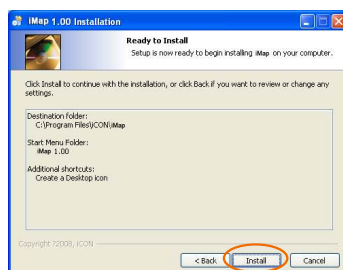


Diagram 6

8 Installation finished

Click "Finish" to complete the iMap™ software installation.

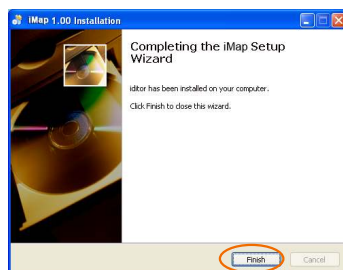
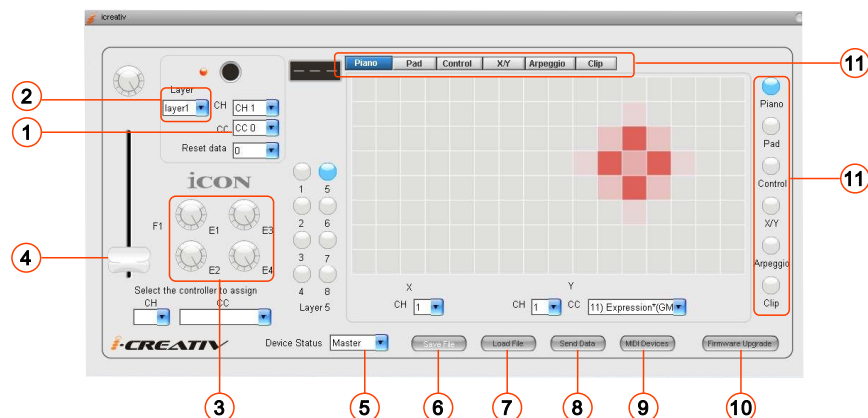


Diagram 7

Assigning MIDI functions with iMap™

You can use iMap™ to assign the MIDI functions of your iCreativ.

iMap™ iCreativ software panel



- ① **Assign the MIDI channel, CC number and Reset value to the AirLight™.**
Select the desired MIDI channel, CC number and Reset value in the pull-down menu for the AirLight™
Tip: The reset value is the setting when your palm is not activating AirLight™.
- ② **Select the 10 different Layers and choose the desired settings for each layer**
You may have 10 different “Layers” for different applications. Each “Layer” can have its own control settings.
- ③ **Assign the MIDI channel and CC number to the knobs (Encoders)**
Select the desired MIDI channel and CC number in the pull-down menu for the four knobs.
- ④ **Assign the MIDI channel and CC number to the faders**
Select the desired MIDI channel and CC number in the pull-down menu for the fader.

⑤ **Master/Slave selector**

Select “Master” if you use it as a standalone device and select “Slave” if you are cascading it as a slave unit with another ICON i-series controller.

⑥ **“Save file” button**

Click this button to save your current settings for the iCreativ. The file is an “.iCreativ” file.

⑦ **“Load file” button**

Click this button to load a previously saved “.iCreativ” setting file for your iCreativ.

⑧ **“Send Data” button**

Click this button to upload the iMap™ software settings to your iCreativ via USB connection.

(Note: You must have connected your iCreativ to your Mac/PC, otherwise the settings upload will not be successful.)

⑨ **“MIDI Devices” button**

Click this button, a MIDI device select window will appear as shown in diagram1. Please select “ICON iCreativ” for the MIDI Out Devices.



Diagram 1

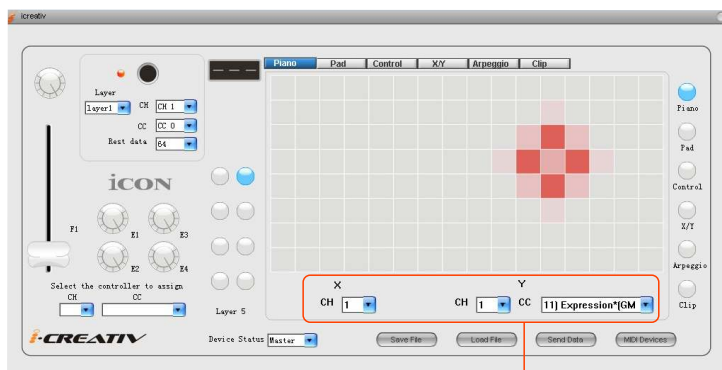
⑩ **“Firmware Upgrade” button**

Click this button to enter into the firmware upgrade window for iCreativ. Please refer to P.13 for the firmware upgrade procedure.

⑪ **Mode select buttons**

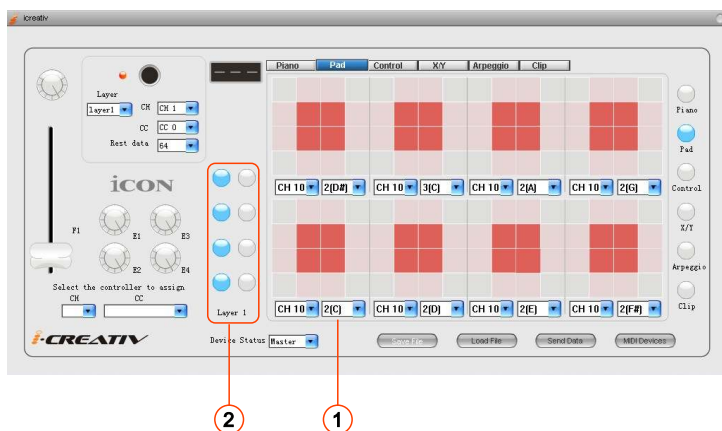
Press the corresponding button to select the mode for the preferred settings.

Piano mode



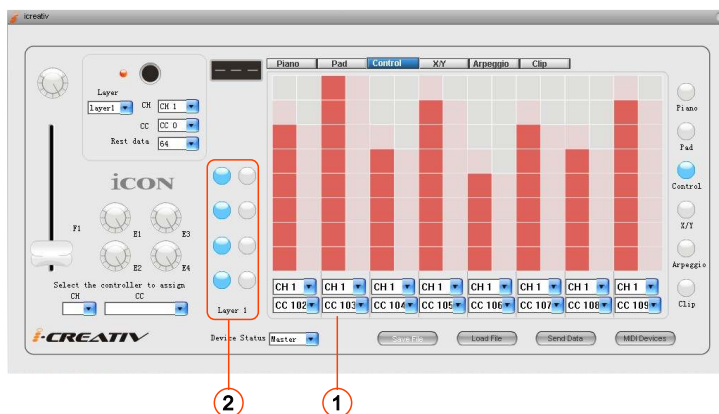
- 1 **Assign the MIDI channel and CC number to the X/Y**
Select the desired MIDI channel and CC number in the pull-down menu for the X/Y.

Pad mode



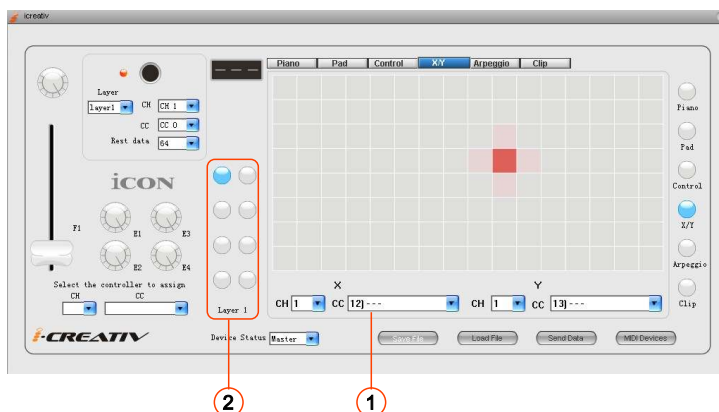
- 1 **Assign the MIDI channel and Note value for individual pads**
Select the desired MIDI channel and note value in each pull-down menu for each individual pad.
- 2 **Select the 2 different Layers and choose the desired settings for each layer**
You may have 2 different "Layers" for different applications. Each "Layer" can have its own control settings.

Control mode



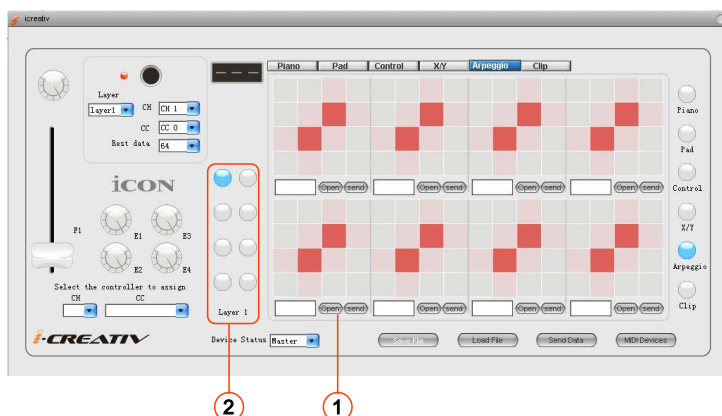
- ① **Assign the MIDI channel and CC number to the sliders**
Select the desired MIDI channel and CC number in the pull-down menu for each slider.
- ② **Select the 2 different Layers and choose the desired settings for each layer**
You may have 2 different “Layers” for different applications. Each “Layer” can have its own control settings.

X/Y Pad mode



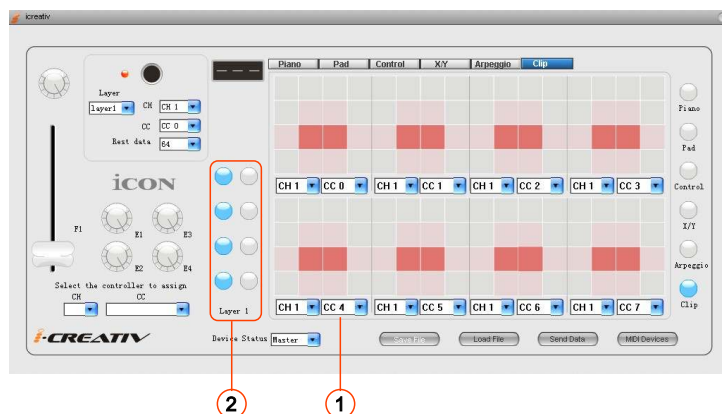
- ① **Assign the MIDI channel and CC number to the X and Y axes for the X/Y pad**
Select the desired MIDI channel and CC number to the X and Y axes.
- ② **Select the 8 different Layers and choose the desired settings for each layer**
You may have 8 different “Layers” for different applications. Each “Layer” can have its own control settings.

Arpeggio mode



- ① **Import the MIDI files produced into each memory slot**
Click the “Open” button to browse the required and click the midi file “send” button to transfer the file into the corresponding iCreativ memory slot.
Note: Each MIDI file size should not be larger than 256-bytes, otherwise the file may not be imported successfully.
- ② **Layer selector**
Select the layer from one to eight for 8-memory slots for each layer.

Clip mode



- ① **Assign the MIDI channel and note value to each clip pad**
Select the desired MIDI channel and note the value in each pull-down menu for the individual clip pad.
- ② **Select the 2 different Layers and choose the desired settings for each layer**
You may have 2 different “Layers” for different applications. Each “Layer” can have its own control settings.

Firmware upgrade

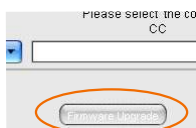


Diagram 1

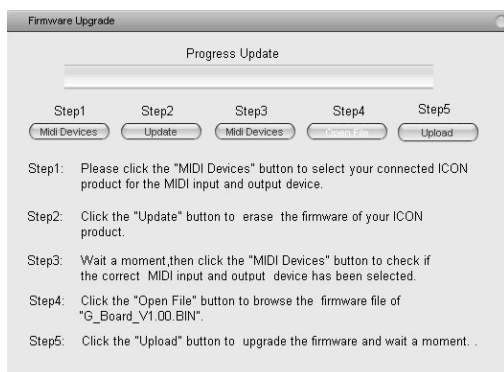


Diagram 2

Step 1: Connect the ICON product using a USB connection. Press the “MIDI Device” button at the top to select your connected ICON product as the “MIDI In and Out” device at the pull-down menu.

Note: If your connected ICON product model name does not appear on the pull-down menu, select “USB Audio” as the MIDI In and Out device.

Step 2: Click the “Update” button.

Step 3: Press the “MIDI Device” button at the top to select your connected ICON product as the “MIDI In and Out” device at the pull-down menu.

Step 4: Click the “Open File” button to browse the new firmware file.

Step 5: Click the “Upload” button to upload the firmware.

Warning: The firmware upload process “MUST” be completed and not be interrupted during the file uploading, otherwise the firmware may not be rewritten again.

Step 6: Touch screen calibration - Use a pen to point to the centre of the square that appears on iCreativ. After the calibration has been completed on the first square, the second square will appear automatically. Calibrate in the same way as the first square. Repeat the process until all 5 squares have been calibrated.

Restore the factory default settings

To restore your iCreativ settings to factory default, simply import the "Factory Default" setting file into your iCreativ with the original setting of the iMap software.

Daisy Chain with iCreativ or any i-series Controllers

You may daisy chain i-series controllers including iCreativ. As i-series controller is USB bus-powered the stability depends on the total power demand of the chain. Please visit our website for recommendations on daisy chain sequence for different i-series controllers.

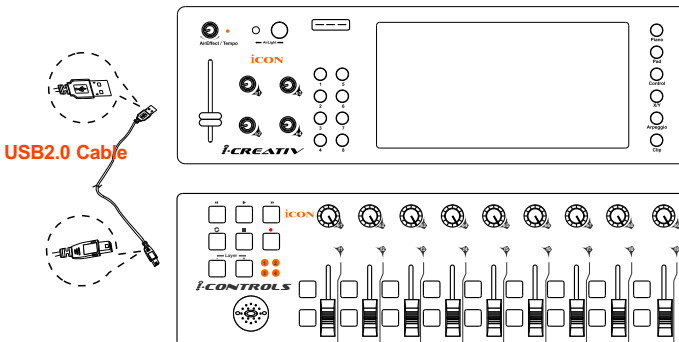
① Connect the first of the i-series controllers to your Mac/PC via the USB port

Select a USB port on your Mac/PC and insert the wide (flat) end of the USB cable and the other small end (B-type USB pack) to i-series controller.

② Connect the next of the i-series controllers

Insert the wide (flat) end of the USB cable to the first i-series controller's second USB port and the other small end (B-type USB jack) to the second i-series controller's USB port

Note: Due to the limitation of power supply via USB port, your connected devices chain might exceed the power supply limit of the USB port and cause malfunction. For recommendations on the combination and daisy chain sequence of different i-series controllers, please visit the ICON website at the following link: www.icon-global.com



Specifications

Connector:	To computer	USB connector (mini B type)
	To i-series controller	USB connector (standard type)
Power supply:		USB bus power
Current consumption:		100mA or less
Weight:		0.84kg (1.8lb)
Dimensions:		325(L) X 99(W) X 20(H)
		12.78"(L) x 3.78"(W) x 0.75"(H)

Services

If your iCreativ needs servicing, follow these instructions.

1. Ensure the problem is not related to operation error or external system devices.
2. Keep this owner's manual. We don't need it to repair the unit.
3. Pack the unit in its original packaging including end card and box. This is very important. If you have lost the packaging, please make sure you have packed the unit properly. ICON is not responsible for any damage that occurs due to non-factory packing.
4. Ship to the ICON tech support center or the local return authorization.



U.S. OFFICE:

ICON Digital Corporation
8001 Terrace Ave., Suite 201
Middleton, WI, 53562
USA

ASIA OFFICE:

ICON (Asia) Corp.
Unit 807-810, 8/F., Sunley Centre,
No. 9 Wing Yin Street, Kwai Chung, NT.,
Hong Kong.

5. For additional update information please visit our website at:
www.icon-global.com



iCON[®]
www.icon-global.com
info@icon-global.com

